

**8K****CINEMA EOS
SYSTEM****EOS R5C**

TECHNICAL SPECIFICATIONS

R5 C PHOTO AND VIDEO OPTIONS

Canon's EOS R5 C combines the professional video features of the Cinema EOS series and the EOS R5's still image capabilities in a true hybrid model.

8K SENSOR AND DIGIC X ENABLE 8K/60P RECORDING

Equipped with an 8K sensor and DIGIC X processing, the EOS R5 C supports high-quality 8K/60p video when externally powered by the DR-E6C coupler & CA-946 AC adapter or the PD-E1 USB power adapter. Use of the Cinema Light RAW format with its high efficiency mode enables 8K/60p internal card recorder without an external recorder.

EXPANDED INTERFACE AND DESIGN FOR PROFESSIONAL VIDEO

A Timecode terminal essential for multi-camera shooting has been added, and the multi-accessory shoe supports professional audio input. A cooling fan has been built into the body, forcing out the heat from inside. This allows extended shooting of high-definition 8K/4K video without interruption.

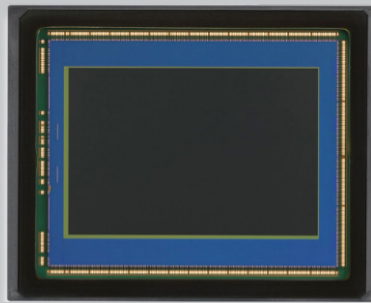
Canon

R5 C HIGH PERFORMANCE PHOTO/MOVIE OPTIONS

Canon's high-resolution, high-speed CMOS sensor in the EOS R5 has been optimized for the EOS R5 C. With the RF lens and DIGIC X image engine, these three elements have been combined into one, enabling 8K/60p video, high-speed continuous capture at approximately 20 frames per second, with approximately 45 million pixels, and other features, all in a single body.



RF Mount



High Speed CMOS Sensor



DIGIC X Processor

INTERNAL COOLING FAN FOR EXTENDED RECORDING



Air intake through right side of back

Exhaust from side

The EOS R5 C adopts a newly-developed heat dissipating design with a built-in cooling fan system that keeps internal temperature from rising along with airflow separate from the main board. Dramatic improvement of the thermal design achieves long hours of non-stop recording in high-quality 8K/60p video.

WORLDS COLLIDE WITH HIGH PERFORMANCE PHOTO AND VIDEO

SUPPORTS 8K/60P* INTERNAL RAW RECORDING

8K offers outstanding definition and realism with 16 times the resolution of full HD video, enabling unprecedented capabilities in video expression and highly flexible workflows, such as 4K cropping from 8K footage. The EOS R5 C can also record 8K video in the highly versatile MP4 format. Lighter proxy video can also be recorded while shooting 8K.



HIGH-QUALITY 4K VIDEO

The EOS R5 C can read out signals for all effective pixels from its full-frame 8K sensor, enabling 4:2:2 10-bit high-definition recording through oversampling during 4K/2K video recording.

8K >>> **4K** 4K 4:2:2 10-bit



4K/120P HIGH FRAME RATE VIDEO

High Frame Rate (HFR) movies in maximum 120P at 4K resolution (4096x2160/3840x2160) are recorded without cropping the angle of view. 4:2:2 10-bit sampling is supported even when shooting in HFR. AF is also enabled when recording in HFR as well as audio on a separate file from the video.

4K 120P + **Dual Pixel CMOS AF** + Audio Recording



VARIETY OF RECORDING FORMATS

Along with Cinema RAW Light, which provides light data sizes for RAW recording, the EOS R5 C supports MXF-based XF-AVC, which conforms to broadcasting standards, and highly versatile MP4.

Cinema RAW Light **MP4** **XF-AVC**



* 8K 60p recording requires connection to an external power source via either the combination of DR-E6C DC coupler + CA-946 power adapter (RF and EF lenses via EF-EOSR lens adapter); or PD-E1 USB Power adapter (RF lenses only). These accessories are available for purchase separately.

WORLDS COLLIDE WITH HIGH PERFORMANCE PHOTO AND VIDEO

SIMULTANEOUS RECORDING IN DIFFERENT FORMATS

Simultaneous recording options in different file formats, resolutions, and colour sampling can be assigned according to workflow requirements.



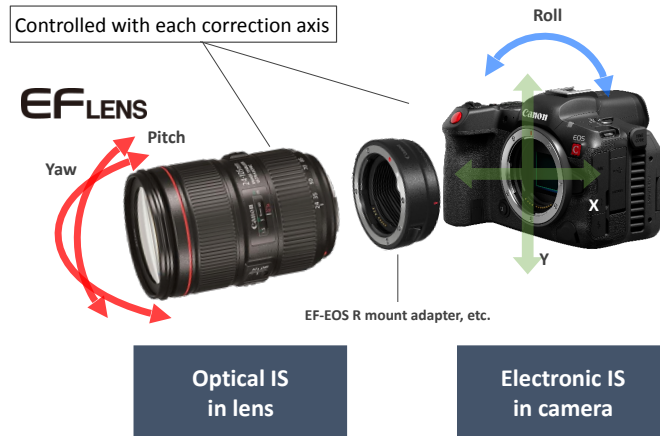
FULL FEATURED CUSTOM PICTURE WITH HDR SUPPORT

| CUSTOM PICTURE FILE | GAMMA/GAMUT | COLOR MATRIX |
|-----------------------|---|--------------|
| C1: BT.709 Wide DR | BT.709 Wide DR / BT.709 | Neutral |
| C2: Canon Log 3 | Canon Log 3 / Cinema Gamut | Neutral |
| C3: PQ | PQ / BT.2020 | Neutral |
| C4: HLG | HLG / BT.2020 | Neutral |
| C5: BT.709 Standard | BT.709 Standard / BT.709 | Video |
| C6: EOS Standard | Look File: EOS Standard BT.709 Wide DR / BT.709 | Neutral |
| C7: EOS Neutral | Look File: EOS Neutral Base: BT.709 Wide DR / BT.709 | Neutral |
| C8: User08–C20:User20 | BT.709 Wide DR / BT.709 | Neutral |

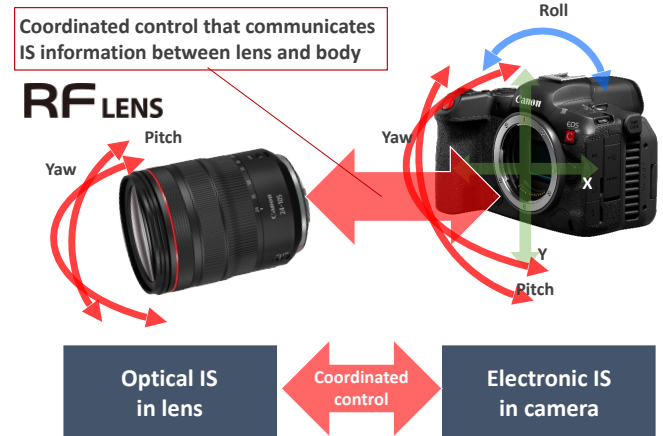
ENHANCED IMAGE STABILIZATION

With an RF lens and electronic IS, coordinated control achieves the optimum hand-shake correction.

EF mount



RF mount

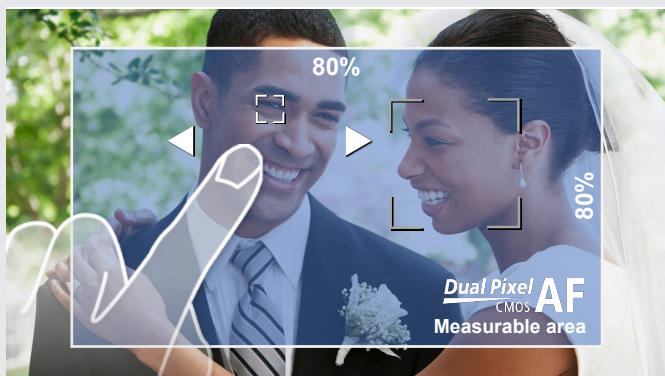


Note: Both are comparisons of lenses with IS mechanisms.

WORLDS COLLIDE WITH HIGH PERFORMANCE PHOTO AND VIDEO

HIGH PERFORMANCE, HIGH PRECISION FOCUSING

Dual Pixel CMOS AF



Touch focus can control high-speed continuous AF, within approximately 80% of the vertical and horizontal area of the screen.

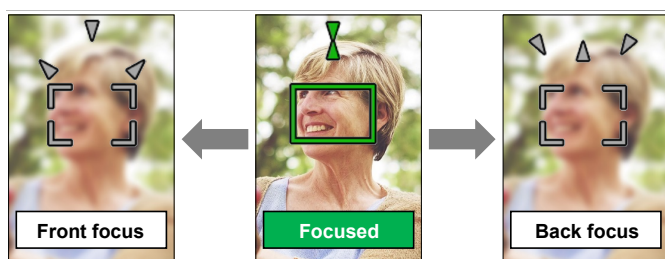


Eye AF detects the human eye and closely tracks it, to continue shooting while maintaining accurate focus.



A wide variety of AF modes enable autofocus that responds to the subject's movement. Head detection can also be used to focus on the back of a person's head, closely tracking the subject even when shooting sports or other fast-moving situations.

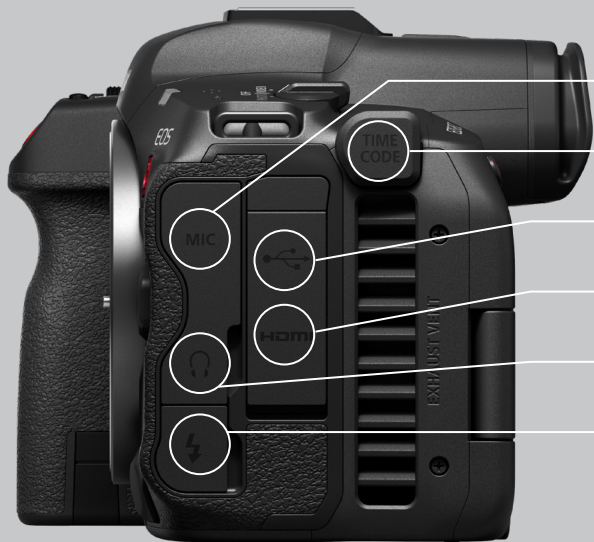
HIGH PERFORMANCE, HIGH PRECISION FOCUSING



The innovative UI applies Dual Pixel CMOS AF phase-difference detection AF technology, to also tell the user if the focus position is in the front, or the back.

WORLDS COLLIDE WITH HIGH PERFORMANCE PHOTO AND VIDEO

ADDITIONAL TERMINALS FOR PROFESSIONAL VIDEO REQUIREMENTS



External Mic Input

Timecode input/output terminal (Din 1.0/2.3)

Digital terminal (USB Type-C)

HDMI micro output

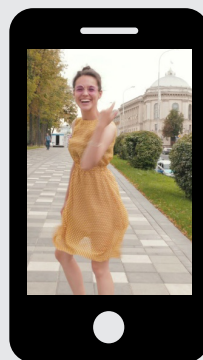
Head terminal

Sync terminal

Timecode in/out terminal



COMMUNICATION FUNCTIONS



Content Transfer Mobile App

The addition of the Wireless File Transmitter WFT-R10 allows Proxy camera files (video/audio) and News Metadata can be instantly transferred from compatible smart phones to make workflows faster and more efficient.



New Browser Remote

Wireless control feature optimised for single-operator shooting, with improved smartphone and tablet layouts.



Multi-Function Shoe

Audio can be transmitted as a digital signal when used with an optional XLR adapter and digital MIC.

TECHNICAL SPECIFICATIONS

| EOS R5 C VIDEO MODE | | |
|---------------------|-----------------------|---|
| CMOS sensor | Sensor | Full Frame |
| | Effective pixels | 45M |
| | Readout | Non-addition |
| | IBIS | No |
| ISO (extended) | | Video mode: ISO160~25600 (100-102400) |
| Mount | | RF |
| Focus | | DAF (121 points) |
| ND filter | | No |
| IS | | Electronic IS (90%, 70%) |
| LCD | | Vari-angle 3.2 inch touch screen (approximately 2.10 million dots) |
| EVF | | 0.5 type 5.76M 0.76x 60fps |
| Gamma | | BT.709 Standard , BT.709 Normal, BT.709 Wide DR, Canon Log 3, PQ, HLG |
| Color Gamut | | BT709, BT2020, Cinema Gamut |
| Custom Picture | | Yes |
| Picture Style | | No |
| LUT | Output LUT | No |
| | Record LUT (LookFile) | Yes |
| Touch UI | | Yes |
| Shooting assist | WFM | Yes |
| | Peaking | Yes |
| | Magn. | Yes |
| | Focus guide | Yes |
| | Market | Yes |



*Main body included accessories.



TECHNICAL SPECIFICATIONS (CONTINUED)

| EOS R5 C VIDEO MODE | | |
|---------------------------------------|-----------------------------------|--|
| Recording formats | Recording resolutions | 8192 x 4320, 7680 x 4320 4096 x 2160, 3840 x 2160, 2048 x 1080, 1920 x 1080, 1280 x 720 |
| | Frame rate | 59.94p, 29.97p, 23.98p, 50.00p, 25.00p 59.94i, 50.00i(XF-AVC) |
| | S&F frame rate | 1p – 120p (with multiple steps) |
| | Maximum frame rate per resolution | Fit 8K 60p Fit 4K 60p Fit 4K 120p CropS35 4K 60P CropS16 2K 120P |
| | Color sample bit depth | 4:2:2 10bit |
| | XF-AVC | Yes |
| | XF-HEVC | No |
| | MP4 [H.264] | Yes |
| | MP4 [H.265(HEVC)] | Yes |
| | RAW | Cinema RAW Light 8K60P, 5.9K60P, 2.9K120P |
| Special recording | Proxy recording | Yes |
| | Double recording | Yes |
| | Relay recording | Yes |
| | Pre recording | Yes |
| | S&F | Yes |
| | Interval recording | Yes |
| Timecode | IN/OUT | Yes |
| Recording media | | CFexpress (Type B) x1 / SD (UHS-II) x1 |
| Audio | Format | LPCM 24bit/48kHz/4ch (MXF,RAW) LPCM 16bit/48kHz/4ch (MP4) AAC 16bit/48kHz/2ch (MP4) |
| Battery and AC adapter | | LP-E6NH / 2130mAh |
| Dustproof/moisture-proof construction | | Same as EOS C300 Mark III / C70 |
| Weight (camera only) | | Approximately 680g (1.5lbs) |
| Size | | Approximately 141.5 x 97.5 x 111mm |

TECHNICAL SPECIFICATIONS (CONTINUED)

| EOS R5 C VIDEO MODE | | |
|------------------------------|--------------|---------------------------------|
| Wi-Fi | | Special grip (WFT-R10) |
| Bluetooth | | No |
| Ether | | Special grip (WFT-R10) |
| IP-Streaming | | Yes |
| FTP transfer | | Yes |
| Browser Remote | | Yes |
| Camera Connect / EOS Utility | | No |
| Terminals | SDI terminal | No |
| | HDMI | TYPE-D (micro) 4K@60P 422 10bit |
| | USB Type-C | Yes (Charging/power supply) |
| | MIC | XLR adapter / 3.5Φ MIC terminal |
| | Remote A | No |
| | T/C | Coaxial compact |



Battery Grip BG-R10



WFT-R10 Wireless File Transmitter



DM-E1D Stereo Microphone



DR-E6C DC coupler and CA-946 AC adapter



PD-E1 USB power adapter

Canon
EOS R5C

www.canon.com.au